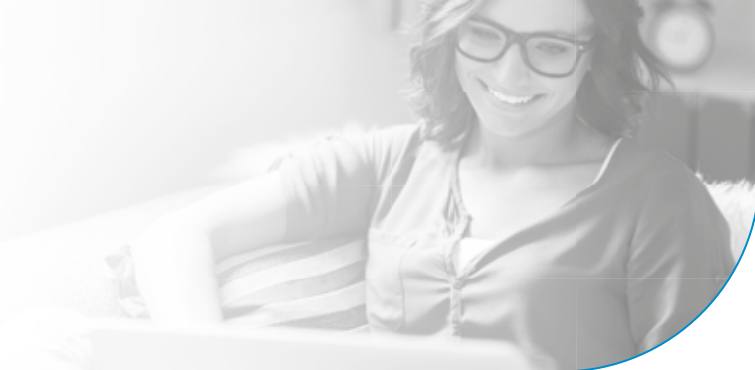


MONOLITH

Outdoor triple technology sensor
programmable by smartphone

MONOLITH

THE HIGH PERFORMANCE OUTDOOR SENSOR THAT SIMPLIFIES INSTALLATION



MONOLITH is an outdoor volumetric sensor with a range of 15 meters, created with the aim of combining detection reliability and ease of installation.

The detection is entrusted to several sensitive elements with different technologies - 2 passive infrared heads and one 24GHz planar microwave head (present only on the DT model) - which are combined and constantly verified by efficient validation algorithms.

The refined and modern design complete the exceptional technical characteristics. MONOLITH can be mounted at a height from ground of 120cm (with pet immunity) or 220cm.

Internal movement

The sensor does not need any external orientation. The PIR and microwave detectors inside are mounted on a single block that can be rotated left and right. In this way it is possible to generate a protection with 100° opening within a total section of 210°. The PIR lenses can also be moved vertically by steps to precisely define the maximum detection distance.

Pet immune

MONOLITH is equipped with PET IMMUNE technology which eliminates unwanted alarms caused by small animals up to 80cm high (maximum mounting height 1.3m).

Total anti-sabotage protection.

MONOLITH integrates an advanced active infrared anti-masking system that promptly detects any attempts to mask the sensor. The sensor is also equipped with an accelerometer for tamper protection against bumps and removing attempts. Through the APP it is possible to adjust the sensitivity of the antimask, its exclusion with temperature below 0° C and the sensitivity of the tamper sensor.

Digital analysis algorithms.

The signal of the individual heads is analyzed by new digital analysis algorithms, capable of validating an intrusion with precision and reliability.

Simple and effective adjustment.

MONOLITH is very simple to put into operation. Once the sensor is fixed at the desired height, simply rotate the heads mono-block and move the PIR lenses according to the size of the area to be protected.

Finally, the new digital LED programming system allows you to adjust the sensor functions in a few seconds without using

trimmers or dip-switches.

BT wireless walk-test and programming

For an even more convenient and precise adjustment, MONOLITH allows you to perform walk-tests and complete programming on the detection field via the VIEW SENSOR APP installed on an Android mobile device in direct wireless BT connection with the sensor (optional BT-LINK-S module required).

Temperature compensation.

The sensor automatically adapts the detection parameters to the outside temperature.



Double **infrared** or triple **technology**



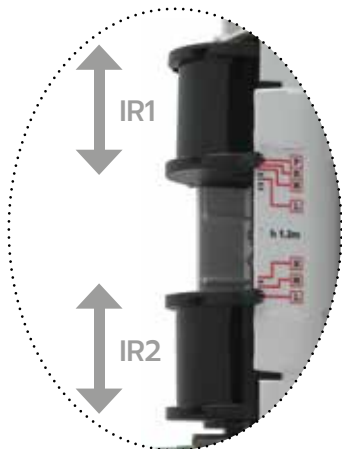
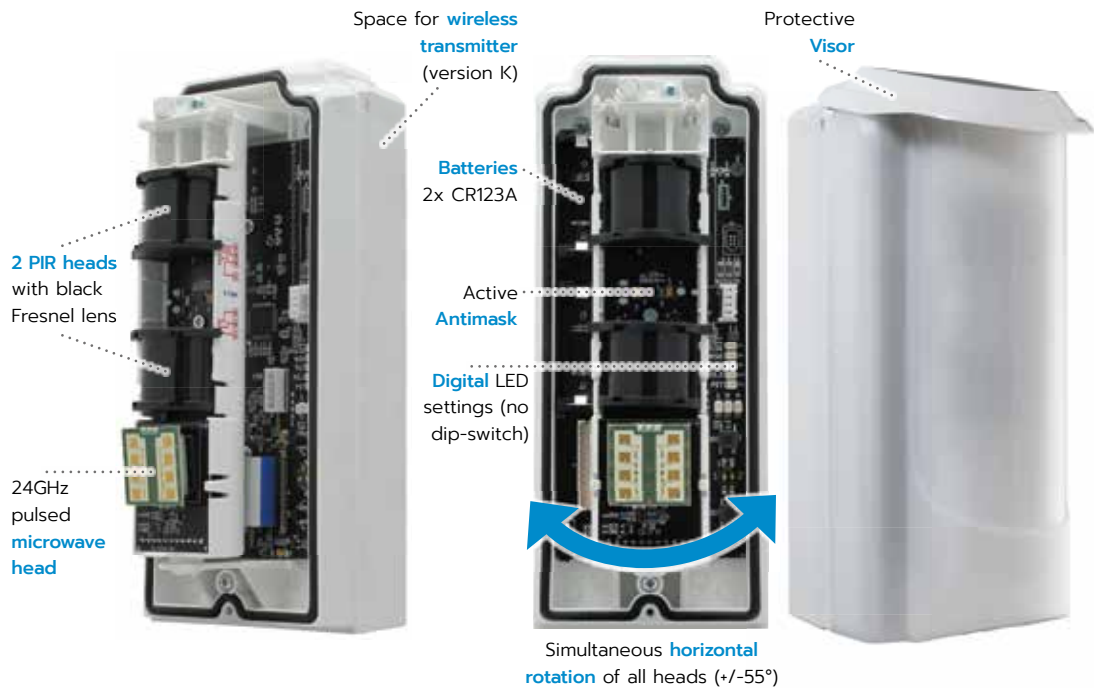
Advanced **digital analysis** algorithms



Active **anti-masking**



BT wireless **walk-test** and programming
(**View Sensor App**)



The PIR heads can be oriented vertically to precisely define the maximum detection distance. The "P" Position guarantees immunity to animals up to 80cm high (maximum mounting height 130cm).

IR1 = P
IR2 = H

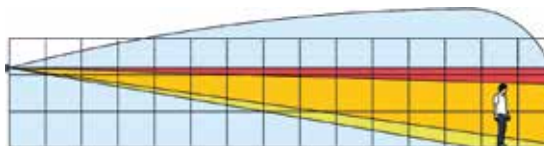


IR1 = P
IR2 = M

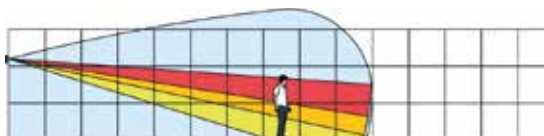


Examples of mounting height 120cm with PET IMMUNITY

IR1 = H
IR2 = H



IR1 = M
IR2 = M



Examples of mounting height 220cm



VIEW SENSOR

The most innovative system on the market for outdoor sensors installation

- ✓ Direct BT wireless connection to the sensor
- ✓ Digital Walk-test with real time visualization of each single head signal through the APP
- ✓ Complete configuration of the sensor through the APP, with more settings than manual programming
- ✓ Visualization of the events number stored in the sensor
- ✓ VIEW SENSOR App is available for Android devices on Google Play

DOWNLOAD



WATCH THE VIDEO



Wireless module BT-LINK-S
(optional)

TECHNICAL DATA

	MONOLITH-R MONOLITH-DTR	MONOLITH-R-868 MONOLITH-DTR-868	MONOLITH-F MONOLITH-DTF	MONOLITH-K MONOLITH-DTK
VERSION	Wireless 433	Wireless 868	Wired	Universal low consumption
DETECTION TECHNOLOGY	MONOLITH = 2 passive infrared (5 sectors Fresnel black lens) MONOLITH-DT = 2 passive infrared (5 sectors Fresnel black lens) + 1 planar 24GHz pulsed microwave			
MOUNTING HEIGHT	120cm or 220cm PET IMMUNE only when mounted up to 130cm			
DETECTION AREA	Range: up to 15m / Opening 100°			
HEADS ADJUSTMENT	Simultaneous horizontal rotation +/- 55° of all PIR and Microwave heads Vertical orientation with independent clicks for the two PIR heads			
SENSITIVITY ADJUSTMENT	from 2.5m up to 15m (6 levels)			
MANUAL SETTINGS	Complete walk-test for all heads with led and buzzer Manual digital setting with LED menu and buttons			
WIRELESS BT SETTINGS	Walk-test and programming with BT-LINK-S wireless module (optional) + App VIEW SENSOR for Android			
DIGITAL ANALYSIS	MONOLITH = REDSENSE algorithm for digital validation of the infrared signal MONOLITH-DT = DUALSENSE algorithm for digital validation of the combined infrared and microwave signal BOTH = Automatic temperature compensation			
AUTOPROTECTION	Active infrared anti-masking (sensitivity adjustable by APP, exclusion below 0°C settable by APP) Cover opening protection Protection against movement / removal by accelerometer (sensitivity adjustable by APP)			
POWER SUPPLY	2 lithium batteries 3V CR123A (not included) (autonomy approx. 4 years)		12Vdc	2 lithium batteries 3V CR123A (not included) - (autonomy approx. 4 years)
FREQUENCY	433,92 MHz	869,65 MHz	-	-
SIGNALLING AND OUTPUTS	Alarm, Tamper, Masking, Low Battery, Supervision (wireless)		Alarm, Tamper, Masking (NC optomos outputs)	Alarm, Tamper, Masking, Low battery (NC optomos outputs)
VISUAL SIGNALLING	WALK-TEST: Red LED for upper IR, green LED for lower IR, blue LED for microwave and alarm confirmation OPERATION: Blue alarm LED (can be disabled)			
OPERATIVE TEMPERATURE	from -40°C up to +70°C - relative humidity 95%			
DIMENSIONS	201x79x81 mm (visor included)			201x79x106 mm (visor included) - (space for wireless transmitter max dim. 118x67x25mm)

Headquarters

Via Bard, 12/A • 10142 Torino (TO) • Italy
Tel +39 011 7701428 • Fax +39 011 7701429
info@duevi.eu • www.duevi.eu • [in](#) [yt](#)



Made in Italy

